

ecoSys-P

Inlet Connection Diagrams

Getting Help:

[Http://www.essco.com](http://www.essco.com)

Service@essco.u-net.com

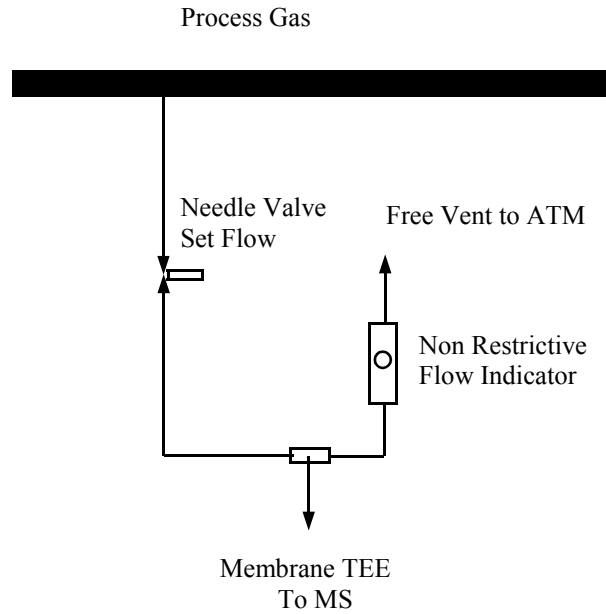
Tel: +44 (0) 1606 49400

Fax: +44(0)1606 330937

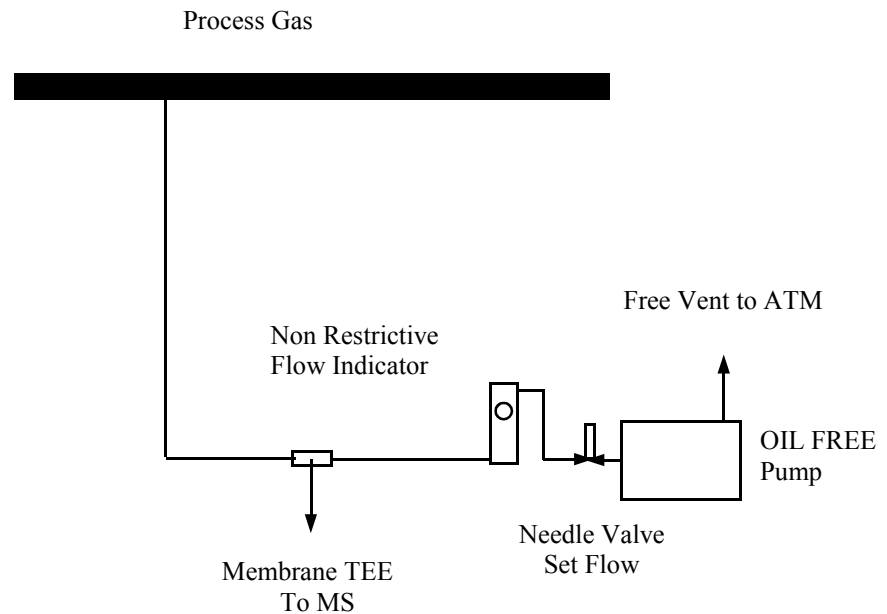


REGISTERED TO
BS EN ISO 9002

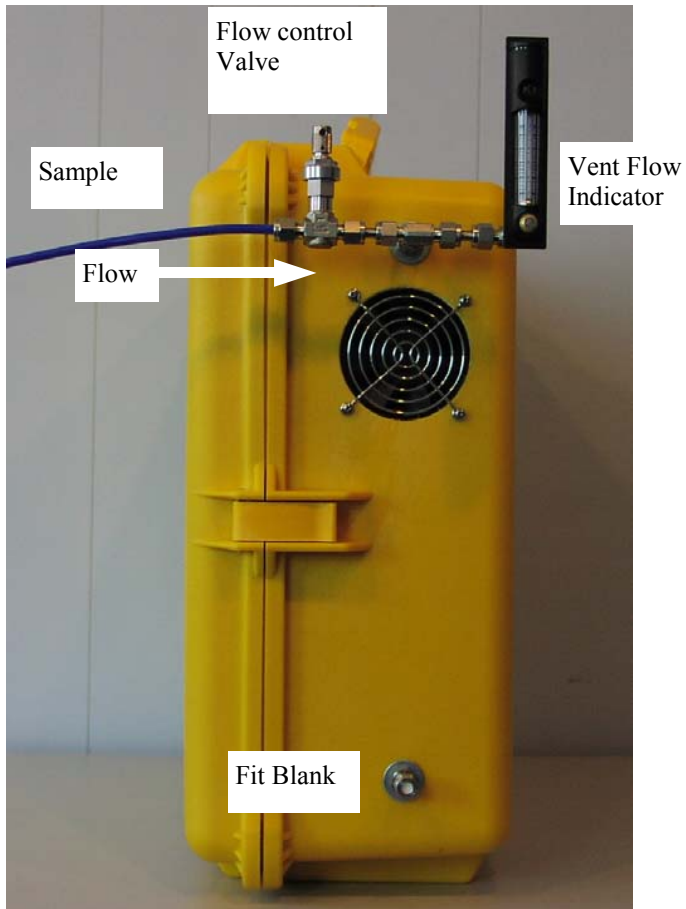




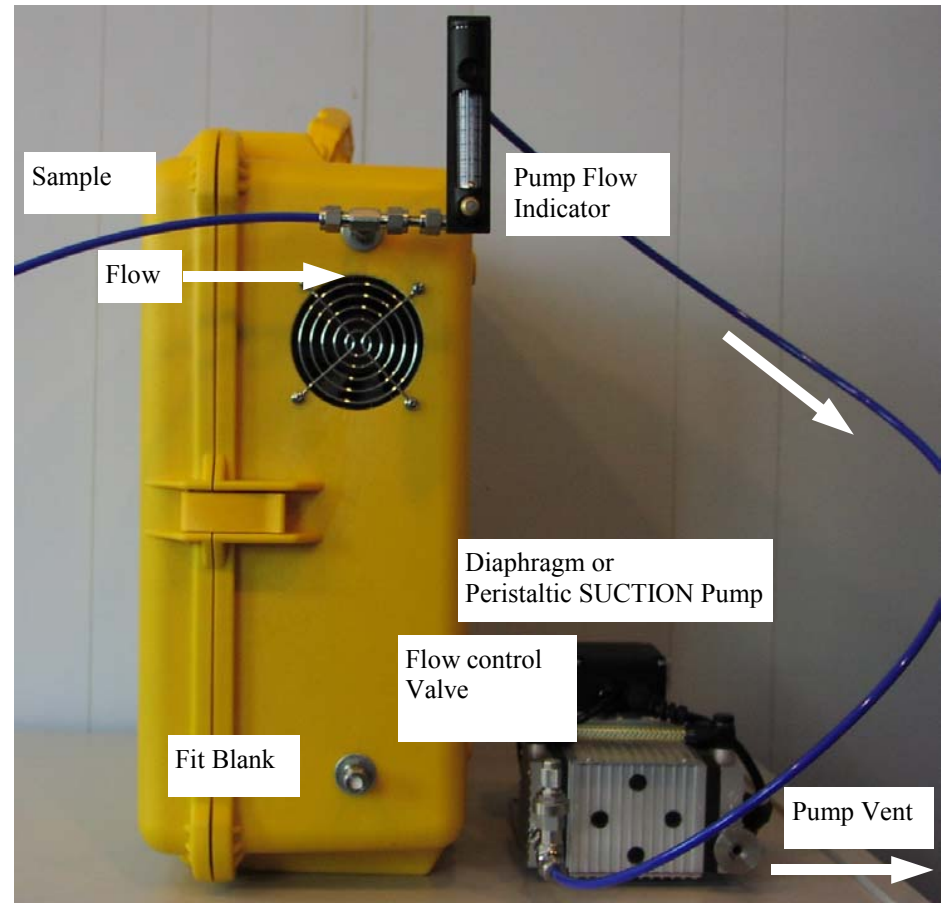
Membrane Inlet
Positive Pressure



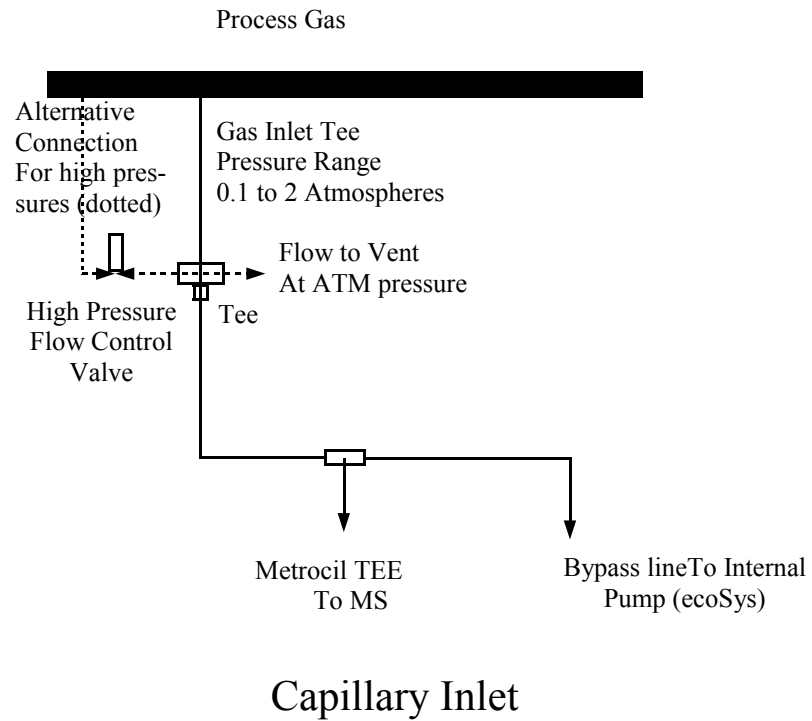
Membrane Inlet
Atmospheric Pressure



Membrane Inlet
Positive Pressure



Membrane Inlet
Atmospheric Pressure



Note: the capillary inlet automatically draws flow from the sample point at approx. 50ml/min.

The capillary inlet end must be maintained close to atmospheric Pressure for normal operation.

In high pressure applications the dotted connection path is used. A high pressure valve bleeds flow to a vent path at atm. Pressure. Flow to vent must be set above 50ml / min.

